



## G91

### 小型防尘微动开关 Dustproof Mini Micro Switch

#### ■ 特点/Features

- ◆ 体型小巧，结构紧凑
- ◆ 长寿命，高可靠性
- ◆ 端子种类齐全
- ◆ 配备各种形式操作柄
- ◆ 广泛用于家电及工业控制等领域

- Small Compact Size
- Long Life, High Reliability
- Vareity of Terminals and Levers
- Widely Used in Auto, Appliance and Other Industry Control

#### ■ 应用/Application

- ◆ 汽车/Auto
- ◆ 推杆电机/Push Rod
- ◆ 管状电机/Tubular Motor
- ◆ 空调/Air-Conditioner
- ◆ 报警器/Alarm
- ◆ 混合器与切肉机/Mixer&Meat Grinder
- ◆ 传真机/Fax Machine
- ◆ 钱币分类机/Money Sorter
- ◆ 玩具汽车/Toy Car

#### ■ 特性参数/Parameters:

额定值/Rating	P1	ENEC/UL:0.1A 125/250V 48VDC 触点可选镀金/Gold Plated Contact Optional
	05	ENEC:5A 125/250VAC;5A 1/8HP, 125/250VAC
	10	ENEC:10(1.5A) 125/250VAC;UL:10A 1/4HP 125/250VAC
操作频率 Operating Frequency	电气/Electrical	10~30次/分 cycles/minute
	机械/Mechanical	120次/分 cycles/minute
初始接触电阻/Contact Resistance(Intiative)		100MΩMax
绝缘电阻/Insulation Resistance(at 500VDC)		100MΩMin
抗电强度/Dielectric Strength		AC 1,000V RMS(50~60Hz)
操作温度/Operating Temperature		-40° C~+125° C或/or -40° C~+85° C
保存湿度/Storage Humidity		85%RH Max
寿命/Service Life	电气/Electrical	10,000~100,000次/cycles(取决于具体型号/Depend on part NO.)
	机械/Mechanical	1,000,000次/cycles

## G91系列微动开关订货指引 G91 Series Micro Switch Ordering Instruction

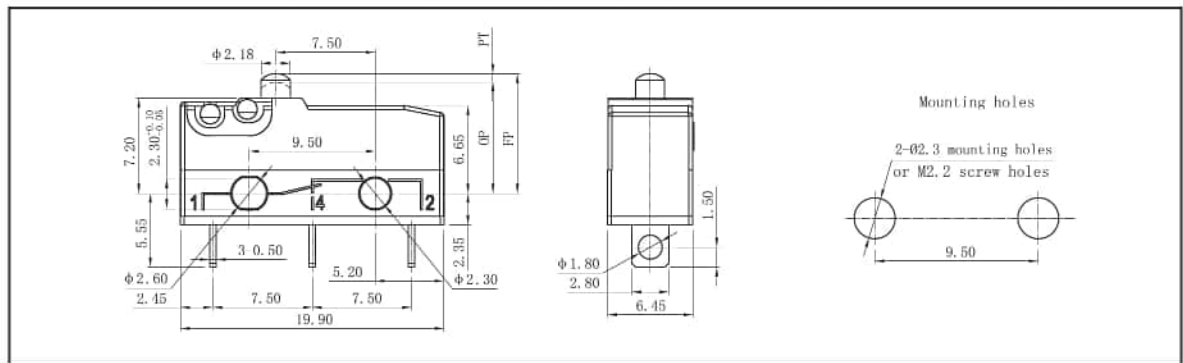
G91	05	150	S	00	D	1	
Switch Type 开关类别	Electrical Rating 额定负载	Operating Force at pin Plunger, Max 操作力(最大值) 数据在不带操作柄测得	Terminal Style 端子类型	Lever Type 操作柄类型	Construction 接触形式	Circuit Code 接触形式	Special Designator 特别设计代码
G91 Series Micro-Switch G91 系列微动开关	P1 ENEC/CQC: 0.1A 125/250VAC 48VDC $\mu$ 25T125 5E4 UL/CUL: 0.1A 125/250VAC 48VDC	100 100gf Max.	S Solder Connect 焊接端子	00 No lever 不带操作柄 Pin Plunger (Spherical surface) 柱式按弹(球面按弹)	D 安装孔2.30mm Mounting Hole 2.30mm	1 SPDT 单板双投	General 通用型 (温度等级 /Temperature grade 40T125)
	05 ENEC/CQC: 5A 125/250VAC 5H4 $\mu$ 40T125 UL/CUL: 5A 125/250VAC	150 150gf Max.	P Straight PCB connect (0.6mm wide) 直PCB 端子 (0.6mm 宽) 底座有凸台	0A Cambered Surface 弧面按弹 用于带手柄型号	E 双侧安装柱 $\phi$ 1.8mmX2.8mm two sides posts $\phi$ 1.8mmX2.8mm	2 SPST-NC 单板单投 -常闭	T Temperature grade 40T85 (温度 等级40T85)
	10 ENEC/CQC: 10(1.5)A 125/250VAC $\mu$ 40T125 UL/CUL: 10.1A 1/4HP 125/250VAC	250 250gf Max.  300 300gf Max.	D 0.11"x0.023" Quick connect 110# 快速连接端子 2.80X0.5mm	R 右侧面PCB 端子 Right side PCB connect	01 Short Straight Lever 17.7mm 短直柄17.7mm	F 右侧安装柱 $\phi$ 1.8mmX2.8mm Right sides posts $\phi$ 1.8mmX2.8mm	3 SPST-NO 单板单投 常开
			L 左侧面PCB 端子 Left side PCB connect	02 Std. Straight Lever 19.9mm 标准直柄 19.9mm	C 左侧安装柱 $\phi$ 1.8mmX2.8mm left sides posts $\phi$ 1.8mmX2.8mm		
			K wide Straight PCB connect (0.6mm wide) 宽直PCB 端子 (1.3mm 宽) 底座有凸台	03 Long Straight Lever 25.8mm 长直柄25.8mm	Other 其他		
			Other 其他	04 Long Straight Lever 55.30mm 04# 手柄 55.30mm			
				05 Small Simulated Roller Lever 15.9mm 小型模拟滚轮 手柄15.9mm			
				06 Roller lever 15.8mm 带滚轮手柄 15.8mm			
				07 Small Simulated Roller Lever 18.15mm 小型模拟滚轮 手柄18.15mm			
				08 Small Simulated Roller Lever 19.00mm 小型模拟滚轮 手柄19.00mm			

## ■G91端子类型/ Terminal type for G91

(单位/Unit:mm)

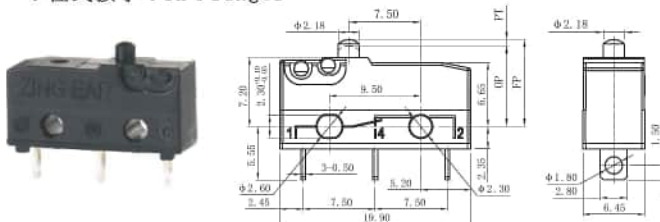
S型/Type 焊接端子 Solder Terminals	P型/Type 直PCB端子 (0.6mm宽) /Straight PCB Terminals (0.6mm wide)
D型/type 110#快速连接端子 (2.8X0.5mm) 110# Quick Connect Terminals	R型/Type 右侧面PCB端子/Right Angled PCB Terminals
L型/Type 左侧面PCB端子 Left Angled PCB Terminals	K型/Type 宽直PCB端子 (1.3mm宽) Straight PCB PCB Terminals (1.3mm Wide)

## ■基本安装孔尺寸及操作特性图/Mounting Hole and Operating Characteristics



## ■外形尺寸和操作特性/Dimensions and Operating Characteristics

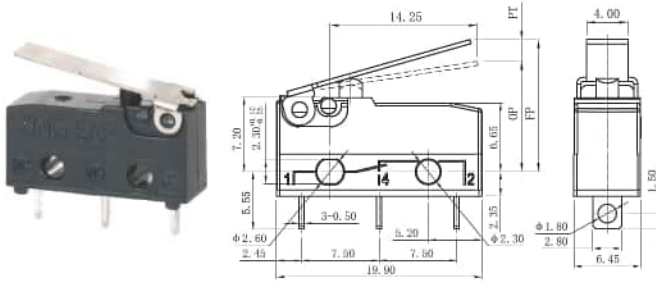
### ◆柱式按挚 Pin Plunger



型号 Part NO.	操作参数/Parameters							
	OF Max. (N)	RF Min. (N)	PT Max. (mm)	OT Min. (mm)	MD Max. (mm)	OP (mm)		
G91□-100□0001	1.00	100	0.10	10	1.1	0.6	0.2	8.4±0.3
G91□-150□0001	1.50	150	0.35	35	1.1	0.6	0.2	8.4±0.3
G91□-250□0001	2.50	250	0.40	40	1.1	0.6	0.2	8.4±0.3
G91□-300□0001	3.00	300	0.60	60	1.1	0.6	0.2	8.4±0.3

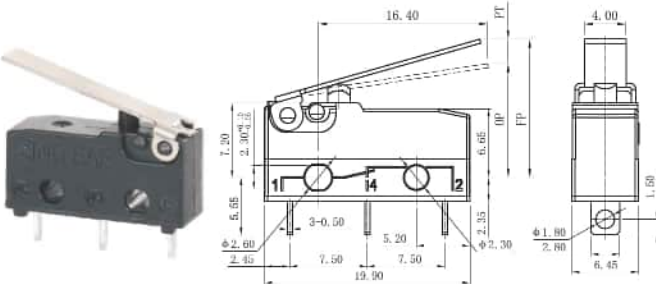
## ■外形尺寸和操作特性/Dimensions and Operating Characteristics

### ◆短直手柄Short Straight Lever



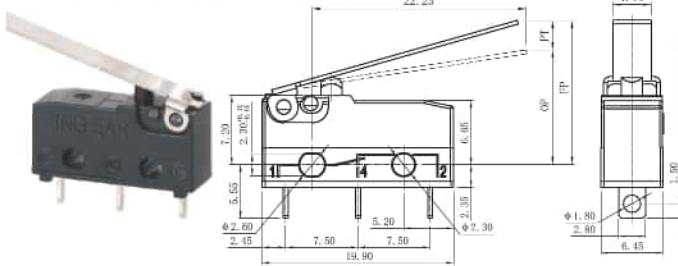
型号 Part NO.	操作参数/Parameters							
	OF Max. (N)	RF Min. (gf)	PT Max. (N)	OT Min. (mm)	MD Max. (mm)	OP (mm)		
G91□□-100□01D1	0.45	45	0.03	3	4.3	1.2	0.8	10.7±0.3
G91□□-150□01D1	0.60	60	0.08	8	4.3	1.2	0.8	10.7±0.3
G91□□-250□01D1	0.85	85	0.10	10	4.3	1.2	0.8	10.7±0.3
G91□□-300□01D1	1.20	120	0.15	15	4.3	1.2	0.8	10.7±0.3

### ◆标准直手柄Std. Straight Lever



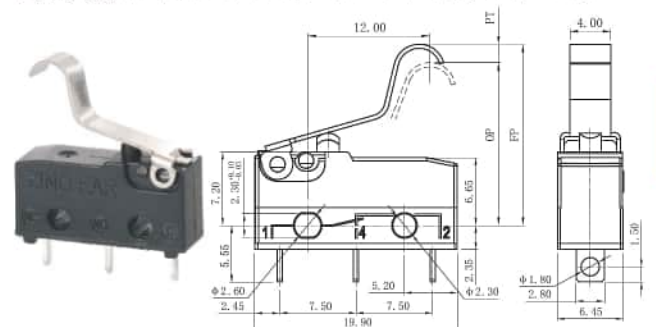
型号 Part NO.	操作参数/Parameters							
	OF Max. (N)	RF Min. (gf)	PT Max. (N)	OT Min. (mm)	MD Max. (mm)	OP (mm)		
G91□□-100□02D1	0.40	40	0.02	2	4.8	1.2	1.2	11.1±1.5
G91□□-150□02D1	0.50	50	0.06	6	4.8	1.2	1.2	11.1±1.5
G91□□-250□02D1	0.75	75	0.08	8	4.8	1.2	1.2	11.1±1.5
G91□□-300□02D1	1.10	110	0.12	12	4.8	1.2	1.2	11.1±1.5

### ◆长直手柄Long Straight Lever



型号 Part NO.	操作参数/Parameters							
	OF Max. (N)	RF Min. (gf)	PT Max. (N)	OT Min. (mm)	MD Max. (mm)	OP (mm)		
G91□□-100□03D1	0.35	35	0.01	1	6.3	1.5	1.5	12.0±1.8
G91□□-150□03D1	0.40	40	0.04	4	6.3	1.5	1.5	12.0±1.8
G91□□-250□03D1	0.65	65	0.06	6	6.3	1.5	1.5	12.0±1.8
G91□□-300□03D1	0.90	90	0.10	10	6.3	1.5	1.5	12.0±1.8

### ◆短模拟滚轮手柄 Short Std. Simulated Roller Lever



型号 Part NO.	操作参数/Parameters							
	OF Max. (N)	RF Min. (gf)	PT Max. (N)	OT Min. (mm)	MD Max. (mm)	OP (mm)		
G91□□-100□05D1	0.50	50	0.03	3	4.3	1.0	0.7	16.0±1.3
G91□□-150□05D1	0.65	65	0.08	8	4.3	1.0	0.7	16.0±1.3
G91□□-250□05D1	0.95	95	0.12	12	4.3	1.0	0.7	16.0±1.3
G91□□-300□05D1	1.30	130	0.16	16	4.3	1.0	0.7	16.0±1.3

